

# Hypertherm®

## MAX70/100

### 70/100 consumables



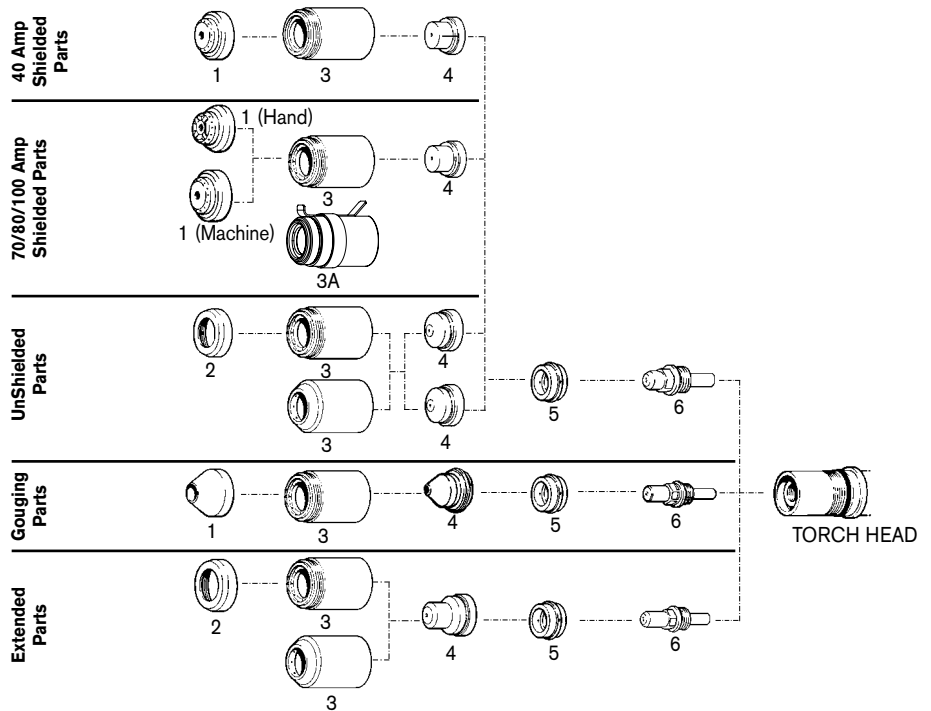
MAX70



MAX100



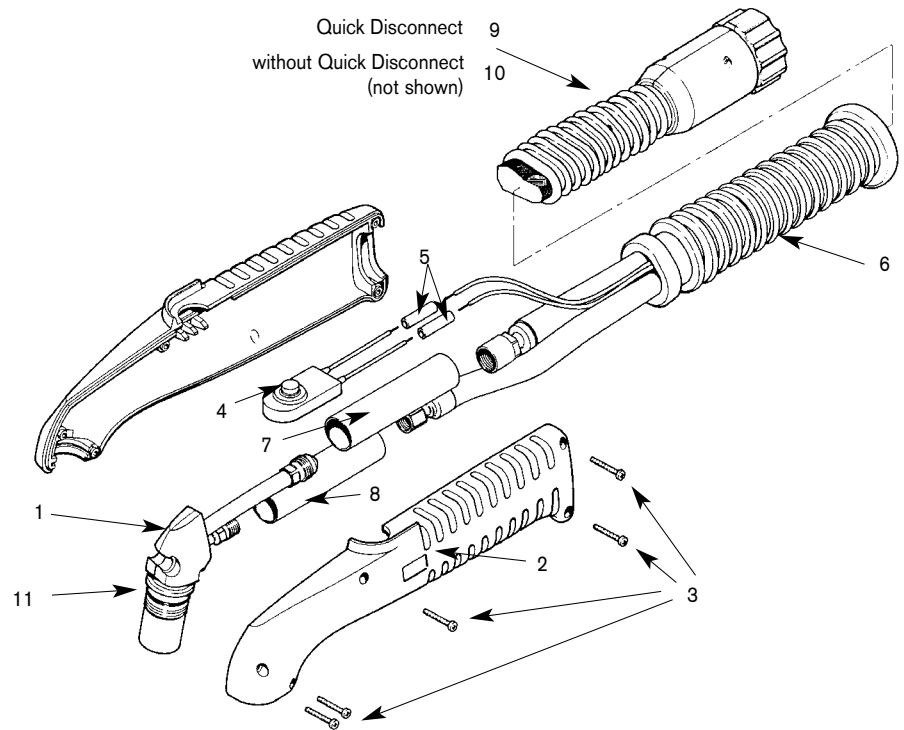
PAC130 Torch



	DESCRIPTION	PART NUMBER CURRENT RATING				QUANTITY PER PACKAGE
		100 AMPS	80 AMPS	70 AMPS	40 AMPS	
Cutting Parts Shielded	6 Electrode, Air, HyLife	120433	120433	120433	120433	5
	6 Electrode, Nitrogen	020193	020193	020193	020193	5
	5 Swirl Ring	020194	020194	020194	020194	1
	4 Nozzle	020337	020397	020397	020396	5
	3 Retaining Cap	020336	020336	020336	020490	1
	3A Retaining Cap, Ohmic	120966	120966	120966	_____	1
	1 Shield, Hand	020335	020335	020335	_____	1
1 Shield, Machine	020334	020334	020334	020492	1	
Unshielded Parts	6 Electrode, Air, HyLife	120433	120433	120433	120433	5
	6 Electrode, Nitrogen	020193	020193	020193	020193	5
	5 Swirl Ring	020194	020194	020194	020194	1
	4 Nozzle	020195	020345	020345	020203	5
	3 Retaining Cap*	020184	020184	020184	020184	1
	1 Shield Cap*	020336	020336	020336	020336	1
	2 Deflector*	020333	020333	020333	020333	1
Gouging Parts	6 Electrode	020744	_____	020744	_____	5
	5 Swirl Ring	020194	_____	020194	_____	1
	4 Nozzle	120459	_____	020878	_____	5
	3 Retaining Cap	020336	_____	020336	_____	1
	1 Shield	020712	_____	020712	_____	1
Cutting Parts Extended	6 Electrode, Air, HyLife, Extended	_____	120444	120444	_____	5
	6 Electrode, Nitrogen, Extended	_____	020886	020886	_____	5
	5 Swirl Ring	_____	020194	020194	_____	1
	4 Nozzle	_____	020563	020563	_____	5
	3 Retaining Cap*	_____	020184	020184	_____	1
	1 Shield Cap*	_____	020336	020336	_____	1
2 Deflector*	_____	020333	020333	_____	1	

\* Non-shielded cutting may use a retaining cap **or** a combination shield cap/deflector.

## MAX70/100 PAC130 hand torch assembly



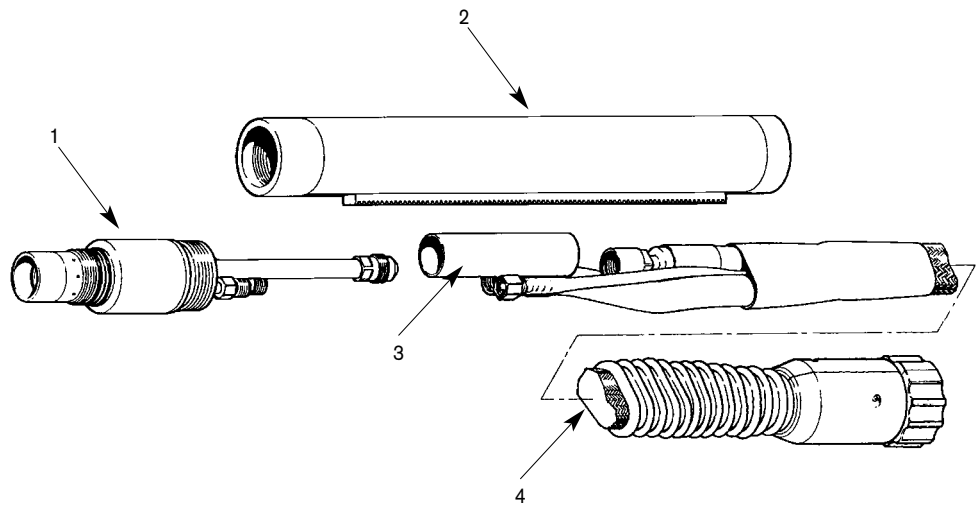
PAC130 Torch

ITEM NUMBER	PART NUMBER	DESCRIPTION
1	020461	Torch Main Body, PAC130
2	001214	Handle, PAC130 (both halves included)
3	075365	Screw, #6 x 3/4" (five required)
4	005094	Switch, Pushbutton, Torch
5	074069	Splice, Butt, Insulated (two required)
6	001217	Boot, PAC130
7	024249	Negative Lead Insulator, 1/16 x 3 1/2"
8	020536	Pilot Arc Lead Insulator, 3/16 x 2 1/2"
9	029667	Leads, Hand Torch, 25' / 7.6 m, with QD*
9	029668	Leads, Hand Torch, 50' / 15.2 m, with QD*
9	029669	Leads, Hand Torch, 75' / 22.9 m, with QD*
10	029198	Leads, Hand Torch, 25' / 7.6 m, without QD*
10	029199	Leads, Hand Torch, 50' / 15.2 m, without QD*
10	029229	Leads, Hand Torch, 75' / 22.9 m, without QD*
11	026018	O-ring, Silico
	059093^	Torch Assembly, 25' / 7.6 m, with QD
	059094^	Torch Assembly, 50' / 15.2 m, with QD
	059095^	Torch Assembly, 75' / 22.9 m, with QD

^ Assembly includes consumables

\* QD = Quick Disconnect

## MAX70/100 Machine Torch Assembly



ITEM NUMBER	PART NUMBER	DESCRIPTION
1	020201	Torch Main Body, 180°
2	020243	Torch Position Sleeve, 10 1/4"
2	020270	Torch Position Sleeve, 18"
3	024173	Pilot Arc Lead Insulator, 9/1. x 2 11/2"
4	028524	Leads, Machine Torch, 25' / 7.6 m, with QD*
4	028527	Leads, Machine Torch, 35' / 10.7 m, with QD*
4	028525	Leads, Machine Torch, 50' / 15.2 m, with QD*
4	028526	Leads, Machine Torch, 75' / 22.9 m, with QD*
4	028326	Leads, Machine Torch, 25' / 7.6 m, without QD* (not shown)
4	028330	Leads, Machine Torch, 35' / 10.7 m, without QD* (not shown)
4	028327	Leads, Machine Torch, 50' / 15.2 m, without QD* (not shown)
4	028335	Leads, Machine Torch, 75' / 22.9 m, without QD* (not shown)

\* QD = Quick Disconnect